

BALDOR[®] • RELIANCE 

Product Information Packet

VM7006A

.5HP,1725RPM,3PH,60HZ,56C,X3416M,XPFC,F1

| Part Detail | | | | | | | |
|-------------|---------|-------------|------------|-------------|--------|---------------|----|
| Revision: | AF | Status: | PRD/A | Change #: | | Proprietary: | No |
| Type: | AC | Elec. Spec: | 34WG1543 | CD Diagram: | CD0007 | Mfg Plant: | |
| Mech. Spec: | 34-5336 | Layout: | 34LY5336 | Poles: | 04 | Created Date: | |
| Base: | N | Eff. Date: | 01-03-2020 | Leads: | 12#18 | | |

| Specs | | | |
|---------------------------------|-------------------------|--------------------------------|-------------------|
| Catalog Number: | VM7006A | Insulation Class: | B |
| Enclosure: | XPFC | Inverter Code: | Not Inverter |
| Frame: | 56C | KVA Code: | L |
| Frame Material: | Steel | Lifting Lugs: | No Lifting Lugs |
| Output @ Frequency: | .500 HP @ 60 HZ | Locked Bearing Indicator: | No Locked Bearing |
| Synchronous Speed @ Frequency: | 1800 RPM @ 60 HZ | Motor Lead Quantity/Wire Size: | 12 @ 18 AWG |
| Voltage @ Frequency: | 208.0 V @ 60 HZ | Motor Lead Exit: | Ko Box |
| | 230.0 V @ 60 HZ | Motor Lead Termination: | Flying Leads |
| | 460.0 V @ 60 HZ | Motor Type: | X3416M |
| XP Class and Group: | CLI GP D; CLII GP F,G | Mounting Arrangement: | F1 |
| XP Division: | Division I | Power Factor: | 63 |
| Agency Approvals: | UR | Product Family: | General Purpose |
| | UL | Pulley End Bearing Type: | Ball |
| | CSA | Pulley Face Code: | C-Face |
| Auxillary Box: | No Auxillary Box | Pulley Shaft Indicator: | Standard |
| Auxillary Box Lead Termination: | None | Rodent Screen: | None |
| Base Indicator: | No Mounting | RoHS Status: | ROHS COMPLIANT |
| Bearing Grease Type: | Polyrex EM (-20F +300F) | Shaft Extension Location: | Pulley End |

| | | | |
|---------------------------------------|---------------------------|------------------------------------|----------------------------|
| Blower: | None | Shaft Ground Indicator: | No Shaft Grounding |
| Current @ Voltage: | 1.000 A @ 460.0 V | Shaft Rotation: | Reversible |
| | 2.000 A @ 230.0 V | Shaft Slinger Indicator: | No Slinger |
| | 2.100 A @ 208.0 V | Speed Code: | Single Speed |
| Design Code: | B | Motor Standards: | NEMA |
| Drip Cover: | No Drip Cover | Starting Method: | Direct on line |
| Duty Rating: | CONT | Thermal Device - Bearing: | None |
| Electrically Isolated Bearing: | Not Electrically Isolated | Thermal Device - Winding: | None |
| Feedback Device: | NO FEEDBACK | Vibration Sensor Indicator: | No Vibration Sensor |
| Front Face Code: | Standard | Winding Thermal 1: | Automatic Thermal Overload |
| Front Shaft Indicator: | None | Winding Thermal 1 Location: | SB |
| Heater Indicator: | No Heater | Winding Thermal 2: | None |
| | | XP Temp Code: | T3C |

| Nameplate NP0016XPSL | | | | | | | | | | |
|----------------------|--------------|---------------|-----|-------|---|--|--|--|--|--|
| NO. | | CC | | | | | | | | |
| SER. # | | | | | | | | | | |
| SPEC | 34-5336-1543 | | | | | | | | | |
| CAT.NO. | VM7006A | | | | | | | | | |
| H.P. | .5 | T. CODE | T3C | | | | | | | |
| VOLTS | 208-230/460 | | | | | | | | | |
| AMPS | 2.1-2/1 | | | | | | | | | |
| R.P.M. | 1725 | | | | | | | | | |
| HZ | 60 | PH | 3 | CLASS | B | | | | | |
| SER.F. | 1.00 | DES | B | CODE | L | | | | | |
| RATING | 40C AMB-CONT | | | | | | | | | |
| FRAME | 56C | NEMA NOM. EFF | 74 | | | | | | | |
| USABLE AT 208V | 2.1 | PF | 63 | | | | | | | |
| BLANK | | | | | | | | | | |

| Parts List | | |
|---------------|--|----------|
| Part Number | Description | Quantity |
| SA009026 | SA 34-5336-1543 | 1.000 EA |
| RA005473 | RA 34-5336-1543 | 1.000 EA |
| 35CB3001A01SP | EXPL CONDUIT BOX, MACH, 1/2" PIPE TAP LE | 1.000 EA |
| 11XW1032G06 | 10-32 X .38, TAPTITE II, HEX WSHR SLTD U | 1.000 EA |
| HW3001B01 | BRASS CUP WASHER, FOR #10 SCREW | 1.000 EA |
| 34EP3703A01 | FR ENDPLATE, MACH XP | 1.000 EA |
| 51XW0832A07 | 8-32 X .44, TAPTITE II, HEX WSHR SLTD SE | 2.000 EA |
| HW4002A02 | 1-11.5X2LG PIPE NIPPLE (F/S) | 1.000 EA |
| HA1025A13 | WSHR,FELT,.38" THICK F-26 CLASS | 1.000 EA |
| HW3021E06 | 1/8 DIA X 5/8 ROLLPIN (F/S) | 1.000 EA |
| HW5100A03 | WAVY WASHER (W1543-017) | 1.000 EA |
| 34EP3705A01SP | PU ENDPLATE, MACH | 1.000 EA |
| 34FN3002A01SP | EXTERNAL FAN, PLASTIC, .637/.639 HUB W/ | 1.000 EA |
| 34FH4002A01SP | IEC FH NO GREASER PRIMED | 1.000 EA |
| 51XW1032A06 | 10-32 X .38, TAPTITE II, HEX WSHR SLTD S | 3.000 EA |
| 35CB3500A01SP | CONDUIT BOX LID, MACH | 1.000 EA |
| 51XN2520A16 | SCREW, HEX WS SLT, ZN, 1/4-20 X 1.00 | 4.000 EA |
| HW2501D13 | KEY, 3/16 SQ X 1.375 | 1.000 EA |
| HA7000A04 | KEY RETAINER 0.625 DIA SHAFTS | 1.000 EA |
| NP0018W | ALUM UL XP CONDUIT BOX NAMEPLATE | 1.000 EA |
| HA6001A01 | THERMAL RETAINER (PLATED) | 1.000 EA |
| 12XF0632A06 | 6-32X3/8 TY F HEX HD SLT | 2.000 EA |
| NS2500A05 | INSULATOR, AUTO THER PROT | 1.000 EA |
| WD1000A16 | 2-520128-2 AMP FLAG TERMINAL(4M/RL) | 3.000 EA |

| Parts List (continued) | | |
|-------------------------------|---|-----------------|
| Part Number | Description | Quantity |
| LC0007 | CONNECTION LABEL | 1.000 EA |
| MG1025G29 | WILKOFASST, 789.229, DARK CHARCOAL GRAY | 0.014 GA |
| 85XU0407S04 | 4X1/4 U DRIVE PIN STAINLESS | 6.000 EA |
| SP5037A01 | TERMINAL PLATE ASS'Y MODEL 34 - 3 PHASE | 1.000 EA |
| TPMYJ70KX | THERMAL 3PH 0.75 AUT 120C | 1.000 EA |
| MJ5000A09 | EFI KIT #1578 (400 ML CARTRIDGE OF EFI | 0.050 EA |
| HA3104A03 | THRUBOLT 5/16-18 X 7.625 W QTE#457 | 4.000 EA |
| WD1000A16 | 2-520128-2 AMP FLAG TERMINAL(4M/RL) | 12.000 EA |
| LB1118 | LABEL,WARNING (ROLL LABEL) | 1.000 EA |
| NP0016XPSL | SS XP UL CSA CC CL-I GP-D CL-II GP-F&G | 1.000 EA |
| 35PA1000 | PKG GRP, PRINT PK1008A06 | 1.000 EA |
| PK3083 | STYROFOAM PACKING CRADLE | 1.000 EA |
| PK3088 | MICROFOAM, 8"X"8 PERF. SHEETS 5,400/RL | 1.000 EA |

AC Induction Motor Performance Data

Record # 6627 - Typical performance - not guaranteed values

| | | |
|-------------------------------|--------------------|------------------------|
| Winding: 34WG1543-R002 | Type: 3416M | Enclosure: XPFC |
|-------------------------------|--------------------|------------------------|

| Nameplate Data | | | | 460 V, 60 Hz: High Voltage Connection | |
|-----------------------|--------------|--------------|----|--|----------------|
| Rated Output (HP) | .5 | | | Full Load Torque | 1.5 LB-FT |
| Volts | 208-230/460 | | | Start Configuration | direct on line |
| Full Load Amps | 2.1-2/1 | | | Breakdown Torque | 6.5 LB-FT |
| R.P.M. | 1725 | | | Pull-up Torque | 4.5 LB-FT |
| Hz | 60 | Phase | 3 | Locked-rotor Torque | 5.6 LB-FT |
| NEMA Design Code | B | KVA Code | L | Starting Current | 6.7 A |
| Service Factor (S.F.) | 1 | | | No-load Current | 0.89 A |
| NEMA Nom. Eff. | 74 | Power Factor | 63 | Line-line Res. @ 25°C | 33 Ω |
| Rating - Duty | 40C AMB-CONT | | | Temp. Rise @ Rated Load | 59°C |

Load Characteristics 460 V, 60 Hz, 0.5 HP

| % of Rated Load | 25 | 50 | 75 | 100 | 125 | 150 |
|-----------------|------|------|------|------|------|------|
| Power Factor | 27 | 39 | 51 | 60 | 67 | 72 |
| Efficiency | 49.8 | 65 | 71.7 | 74.5 | 75.6 | 75.5 |
| Speed | 1785 | 1770 | 1756 | 1737 | 1724 | 1705 |
| Line amperes | 0.9 | 0.94 | 0.98 | 1 | 1.15 | 1.27 |

Performance Graph at 460V, 60Hz, 0.5HP Typical performance - Not guaranteed values

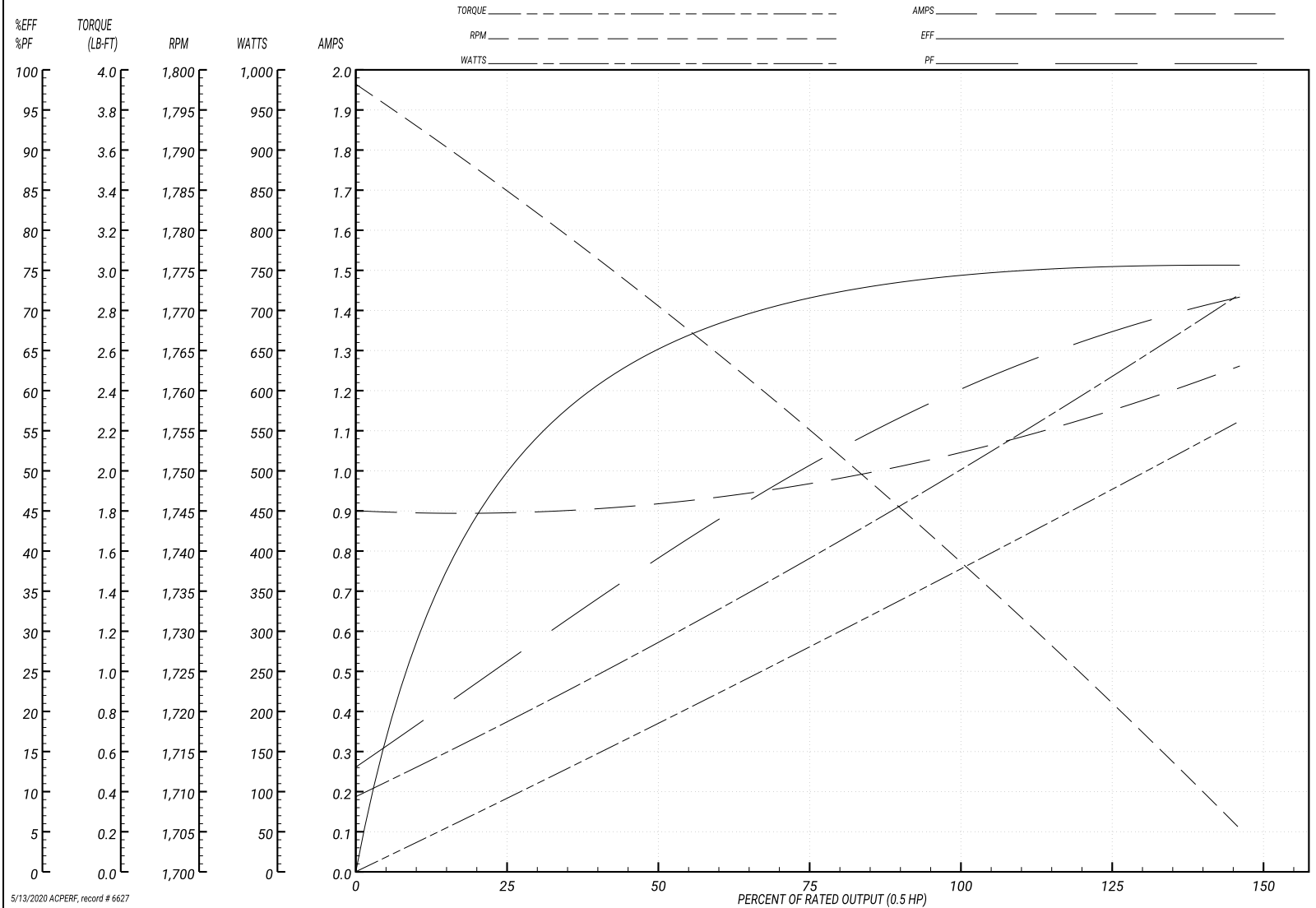
ABB Motors and Mechanical Inc.

WINDING # 34WG1543

Typical performance - not guaranteed values.

0.5 HP 3 PH 60 HZ 1725 RPM 460 V 3416M

TORQUES(LB-FT): PO=6.5 PU=4.5 LR=5.6 LRA=6.7



5/13/2020 ACPERF, record # 6627

AC Induction Motor Performance Data

Record # 20790 - Typical performance - not guaranteed values

| | | |
|-------------------------------|--------------------|------------------------|
| Winding: 34WG1543-R002 | Type: 3416M | Enclosure: XPFC |
|-------------------------------|--------------------|------------------------|

| Nameplate Data | | | | 208 V, 60 Hz: Low Voltage Connection | |
|-----------------------|--------------|--------------|----|---|---------------------------|
| Rated Output (HP) | .5 | | | Full Load Torque | 1.51 LB-FT |
| Volts | 208-230/460 | | | Start Configuration | direct on line |
| Full Load Amps | 2.1-2/1 | | | Breakdown Torque | 5.25 LB-FT |
| R.P.M. | 1725 | | | Pull-up Torque | 3.56 LB-FT |
| Hz | 60 | Phase | 3 | Locked-rotor Torque | 4.43 LB-FT |
| NEMA Design Code | B | KVA Code | L | Starting Current | 11.8 A |
| Service Factor (S.F.) | 1 | | | No-load Current | 1.39 A |
| NEMA Nom. Eff. | 74 | Power Factor | 63 | Line-line Res. @ 25°C | 8.35 Ω |
| Rating - Duty | 40C AMB-CONT | | | Temp. Rise @ Rated Load | 50°C |
| | | | | Locked-rotor Power Factor | 65 |
| | | | | Rotor inertia | 0.0381 LB-FT ² |

Load Characteristics 208 V, 60 Hz, 0.5 HP

| % of Rated Load | 25 | 50 | 75 | 100 | 125 | 150 |
|-----------------|------|------|------|------|------|------|
| Power Factor | 37 | 52 | 65 | 77 | 79 | 81 |
| Efficiency | 49.3 | 64.9 | 71.8 | 74.4 | 75.5 | 75.5 |
| Speed | 1782 | 1765 | 1748 | 1725 | 1707 | 1683 |
| Line amperes | 1.43 | 1.54 | 1.67 | 1.79 | 2.14 | 2.47 |

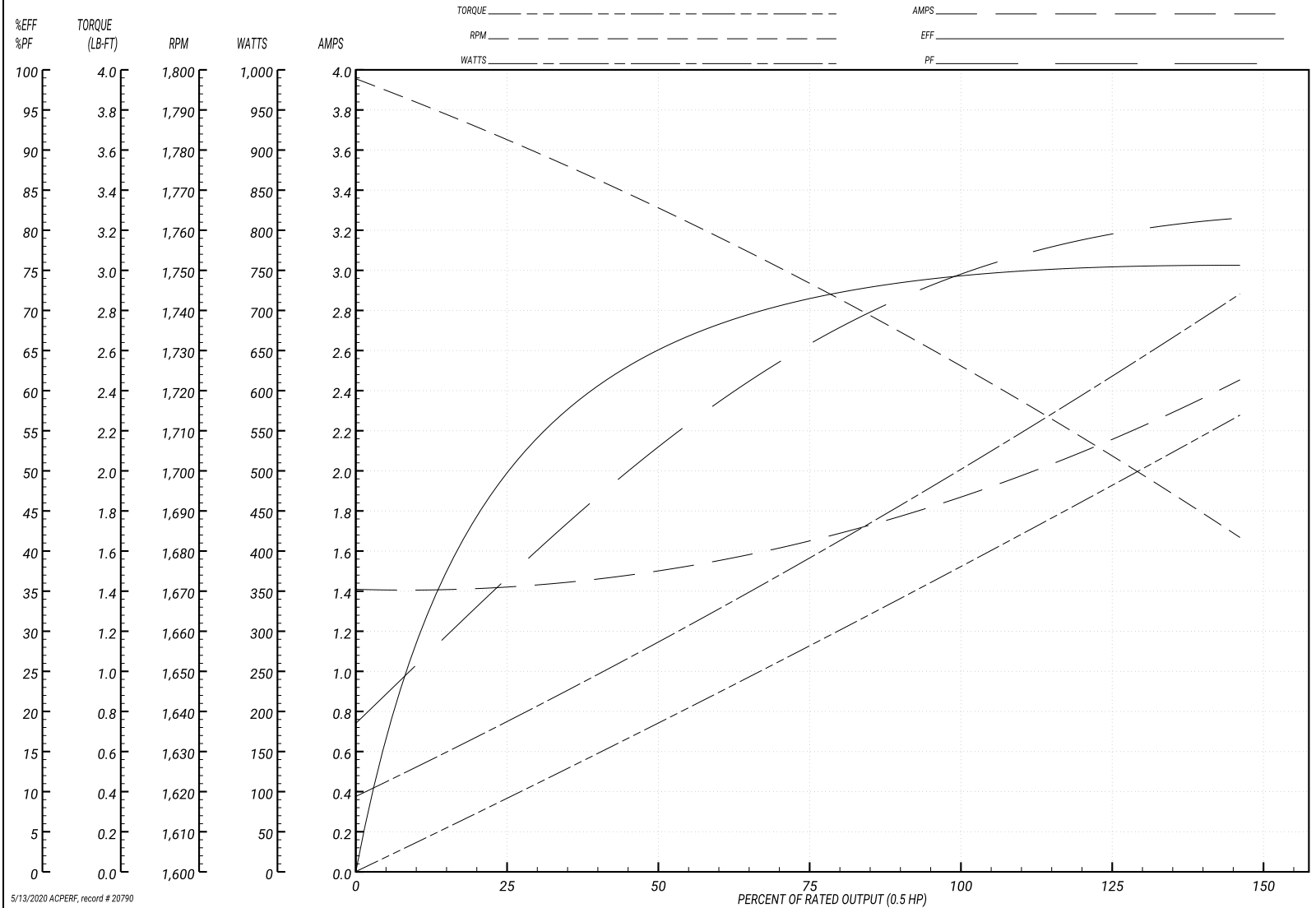
Performance Graph at 208V, 60Hz, 0.5HP Typical performance - Not guaranteed values

ABB Motors and Mechanical Inc.

WINDING # 34WG1543

Typical performance - not guaranteed values.

0.5 HP 3 PH 60 HZ 1725 RPM 208 V 3416M
 TORQUES(LB-FT): PO=5.25 PU=3.56 LR=4.43 LRA=11.8



5/13/2020 ACPERF, record # 20790

AC Induction Motor Performance Data

Record # 69785 - Typical performance - not guaranteed values

| | | |
|-------------------------------|--------------------|------------------------|
| Winding: 34WG1543-R002 | Type: 3416M | Enclosure: XPFC |
|-------------------------------|--------------------|------------------------|

| Nameplate Data | | | | 230 V, 60 Hz: Low Voltage Connection | |
|-----------------------|--------------|--------------|----|---|---------------------------|
| Rated Output (HP) | .5 | | | Full Load Torque | 1.5 LB-FT |
| Volts | 208-230/460 | | | Start Configuration | direct on line |
| Full Load Amps | 2.1-2/1 | | | Breakdown Torque | 6.5 LB-FT |
| R.P.M. | 1725 | | | Pull-up Torque | 4.5 LB-FT |
| Hz | 60 | Phase | 3 | Locked-rotor Torque | 5.6 LB-FT |
| NEMA Design Code | B | KVA Code | L | Starting Current | 13.4 A |
| Service Factor (S.F.) | 1 | | | No-load Current | 1.78 A |
| NEMA Nom. Eff. | 74 | Power Factor | 63 | Line-line Res. @ 25°C | 8.34 Ω |
| Rating - Duty | 40C AMB-CONT | | | Temp. Rise @ Rated Load | 59°C |
| S.F. Amps | | | | Temp. Rise @ S.F. Load | 68°C |
| | | | | Locked-rotor Power Factor | 66.1 |
| | | | | Rotor inertia | 0.0381 LB-FT ² |

Load Characteristics 230 V, 60 Hz, 0.5 HP

| % of Rated Load | 25 | 50 | 75 | 100 | 125 | 150 |
|-----------------|------|------|------|------|------|------|
| Power Factor | 27 | 39 | 50 | 62 | 66 | 71 |
| Efficiency | 49.8 | 65 | 72.1 | 74.4 | 75.8 | 75.4 |
| Speed | 1785 | 1770 | 1756 | 1737 | 1724 | 1705 |
| Line amperes | 1.8 | 1.88 | 1.96 | 2 | 2.3 | 2.54 |

Performance Graph at 230V, 60Hz, 0.5HP Typical performance - Not guaranteed values

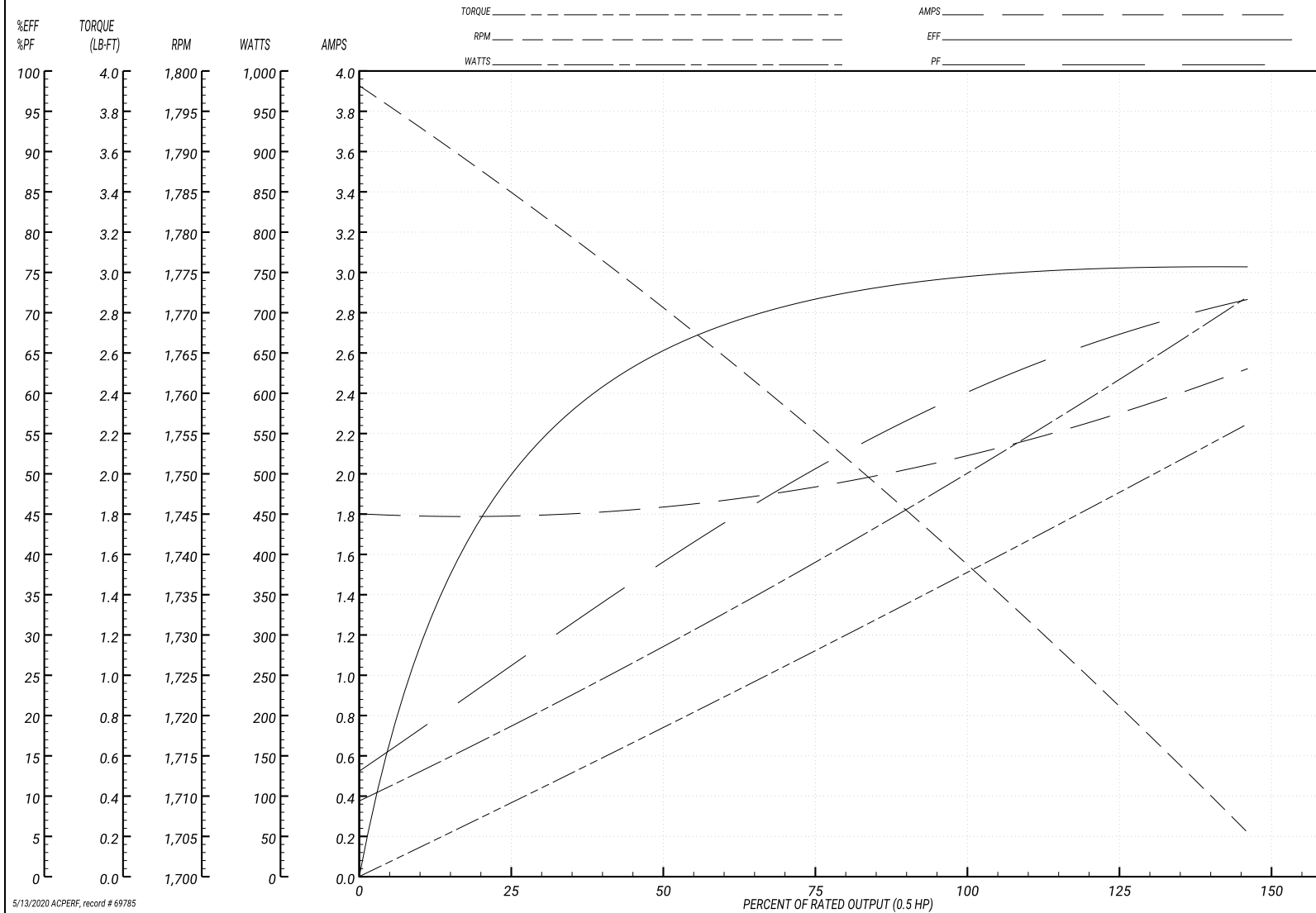
ABB Motors and Mechanical Inc.

WINDING # 34WG1543

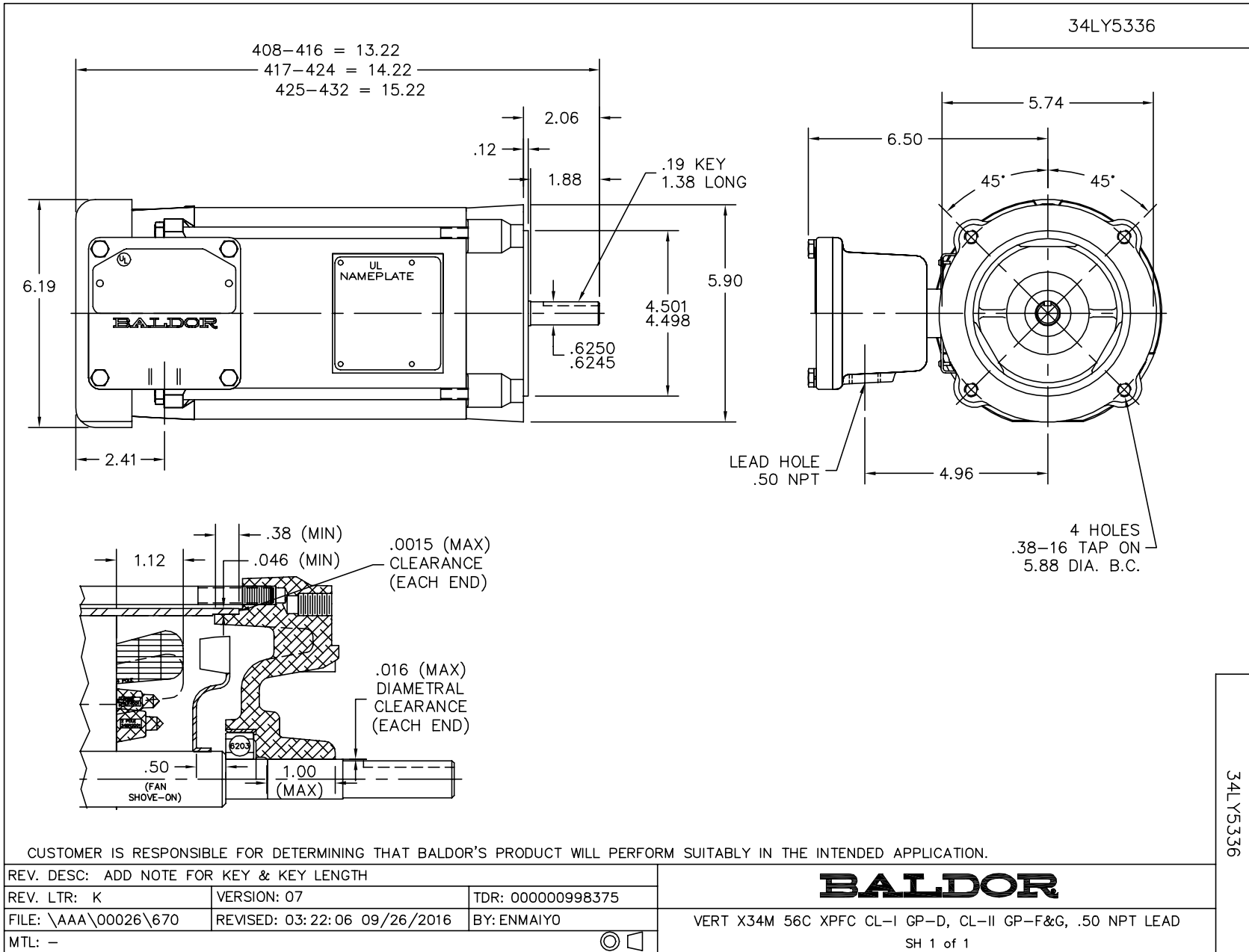
Typical performance - not guaranteed values.

0.5 HP 3 PH 60 HZ 1725 RPM 230 V 3416M

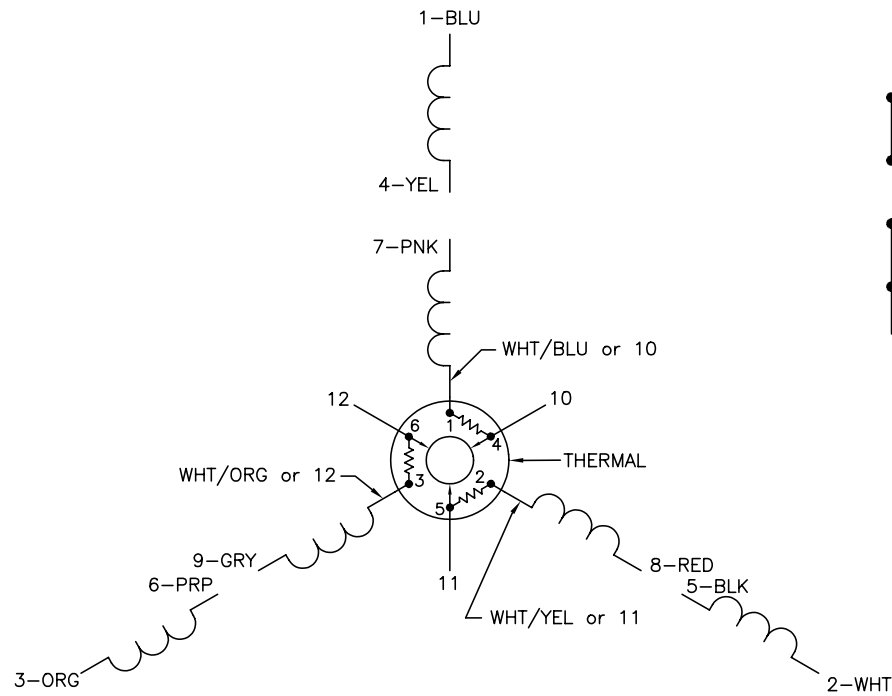
TORQUES(LB-FT): PO=6.5 PU=4.5 LR=5.6 LRA=13.4



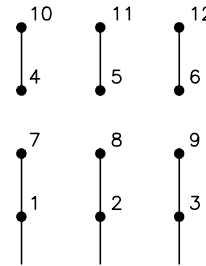
5/13/2020 ACPERF, record # 69785



CD0007

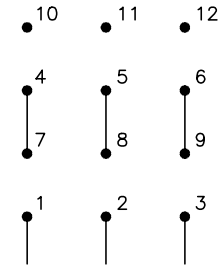


LOW VOLTAGE
(2Y)



LINE

HIGH VOLTAGE
(1Y)



LINE

NOTES:

1. INTERCHANGE ANY TWO LINE LEADS TO REVERSE ROTATION.
2. ACTUAL NUMBER OF INTERNAL PARALLEL CIRCUITS MAY VARY.
3. LEAD COLORS ARE OPTIONAL. LEADS MUST ALWAYS BE NUMBERED AS SHOWN.

| | | | |
|----------------------------------|---------|------------------------|--------------|
| REV. DESC: ADDED "CK" PLANT CODE | | | |
| REV. LTR: E | BY: EAH | REVISED: 05/06/99 17:1 | TDR: 0181040 |
| L00000 | | FILE: AAA00008370 | MDL: - |
| | | MTL: - | |

BALDOR ELECTRIC Co.

3PH, DV, THERMAL, 12 LEADS

CD0007